



The Switchlist

Official Publication of the Pacific Northwest Region, National Model Railroad Association

November 2017

Form 255
UNION PACIFIC RAILROAD COMPANY

SWITCH-ENGINEMEN'S DAILY REGISTER

FOREMAN	No. of Helpers	ENGINEER AND FIREMAN	Compared Time	Job Worked	Highest Bulletin Number	Left Round House or Motor Track	SHIFT WORKED		Arrived Round House or Motor Track	HOURS WORKED			Accumulated Miles	Explanation of Meal Period, Overtime, Delays, etc.
							Began Work	Quit Work		Meal Period	Straight Time	Over Time		

Illinois Central Gulf Switchlist

YRS15, Friday, February 7, 1982
 at: Reserve
 Time: 7:15 AM Throttle: 0
 Next Yard: St. Rose, LA
 Draw Maduro
 Origin: Reserve, LA
 No: 7-027
 Destination: St. Rose, LA
 UP 2700 Cabin: 199044

be SPOT NxtLoc Tons Contents Hdg

Hall 2 42 700M 4865
 Form 818-A Standard—Small
**SWITCH CARS CAREFULLY AND SAFELY
 AVOID ROUGH HANDLING**
 Santa Fe
 (Insert Name of Railway Company)
SWITCH LIST

At Station 1-3-18
 Train No. 350/P Engine No. 470/P Time 6/P M.

CAR	Initials	No.	Contents	Destination	Consignee	Tonnage
1						
2		180	Williams Bros	70		
3		44	68262	70		
4		127	68758	72		
5				72		
6				72		
7				72		
8				72		
9				72		

- ### In This Issue
- PNR News and Announcements:
 - ◆ 2017 NMRA President's Award to the Division
 - ◆ In Memorium (New)
 - Features:
 - ◆ Fixing Athearn Blue Box Cars
 - ◆ Model Railroading Can Make You a Genius
 - Officer, Staff, and Division Reports
 - PNR Interchange (New)
 - Timetable

TRAIN NO. _____ ORS9

Duplicate	AT	STATION	INITIAL	NUMBER	CONTENTS	FROM
1						
2						
3						
4						
5						
6						
7						





The Switchlist

Editor:

Greg Kujawa

406.589.6256

Email: switchlist@pnr.nmra.org.

The Switchlist is the official publication of the Pacific Northwest Region, National Model Railroad Association and is published quarterly in February, May, August, and November.

SUBSCRIPTIONS

The Switchlist is available free of charge online at the PNR website, pnr.nmra.org. PNR members with current email addresses on file with the NMRA will receive an email notice when the latest issue is posted. To receive notice when the next *Switchlist* is posted (and other news of interest to PNR members), join our email list by sending a blank email to:

PNR-NMRA-subscribe@YahooGroups.com

CONTRIBUTIONS

Readers of *The Switchlist* are encouraged to submit news, articles, photos, and drawings about PNR activities past, present and future, and articles on other aspects of model railroading are also appreciated. If the work of others, is being included, please ensure you have their written permission and include attributions as appropriate. All contributions must be digital and preferably in file formats compatible with the Microsoft platform.

Photographs and illustrations are encouraged in all common digital formats. The Editor reserves the right to accept, reject, and edit contributions as space, time, and suitability of material dictate. *The Switchlist* does not pay for articles.

Please email your contributions to the editor at switchlist@pnr.nmra.org. Deadline for submissions is:

February 1
May 1
August 1
November 1

Letters to the editor and other editorial opinions are those of the author and do not necessarily reflect opinions and policy of the PNR or NMRA. Complete staff and contact information is available in this newsletter and on the PNR website: pnr.nmra.org.

ADVERTISING

Non-commercial Classified Advertising will be accepted from PNR members at no charge as a member service; email submissions to the editor.

© 2017 Pacific Northwest Region, National Model Railroad Association. Permission to reprint is granted to all affiliates of the NMRA. Others may request permission to reprint from the Editor.

National Model Railroad Month

Wow! Can you believe it's already November? If you didn't already know, or perhaps if you forgot, that means it's National Model Railroad Month and the annual opportunity for promoting the hobby to non-model railroaders. The NMRA has a [webpage](#) with a few ideas to help you share the fun of model railroading:



- Have a layout open house for your neighbors
- Take a train (or model) to work
- Hold a clinic or two at your local public library
- Take a few photos of your layout (or models) with your smartphone, then show them to your friends and co-workers.

Take a look at the webpage for more tips on these and other ideas.

Beginning with this issue of *The Switchlist*, we have reorganized some content of the newsletter. The first change is a subsection titled *In Memorium* and is devoted to the announcement of deceased PNR members. This information had been part of the Office Manager's Report but we wanted to make it more prominent.

The other change is a new section, *PNR Exchange*, where members can post non-commercial classified ads free-of-charge. Actually, this member service isn't totally new, but it hasn't been active since 2010. It is provided for members who want to buy, sell, donate, or exchange model or prototype railroad related items with other members.

You are encouraged to use this space to share information, too. For example, you can let other members know you're seeking or want to share model or prototype related information, research results, and other resources or materials with other members. Our region covers a vast area, with many modelers living in relatively isolated locations. We hope the PNR Exchange proves opportunities for you to easily connect with fellow members who may be needing a specific model, kit, part, or supplies surplus to your needs. Or, they may have a prototype track diagram or photo of an area you want to model. Guidelines on how to take advantage of this benefit are on page 12.

We have a couple of articles by Tom Waters and Bob Parrish, both of the Third Division. Bob has a few more articles coming, but don't let this intimidate you. from submitting one yourself. The more the merrier!

Right below our first "For Sale" ads, in the PNR Interchange, President Jack Hamilton posted a "Help Wanted" ad for the Regional Education Committee Chair currently vacant. Please give serious thought to raising your hand for this.

As always, don't forget to check out all the upcoming events listed in the Timetable on pages 14-15 (also posted on the [PNR website](#)).

And finally, **SAVE THE DATE ... May 30-June 2, 2018**, for the PNR's next convention. Hosted by the 2nd Division, [Stumptown Express 2018](#) will be held in Portland at the Red Lion Hotel on the River—Jantzen Beach. The convention website is now active and will continually be updated as new information becomes available.



Happy holidays to you and your family!
Greg Kujawa, Editor

PNR News and Announcements

2017 President's Award for Service to the Division

Greg Kujawa, *Switchlist* Editor

Shirley Sample, long-time member of the Fifth Division (including PNR's Immediate Past President and current Vice-President), has been awarded the newly established **2017 President's Award for Service to the Division**. According to its official description, the NMRA President's Award for Service to the Division will be awarded by the NMRA president to no more than one individual per year in each Region who's done outstanding, "beyond-the-call-of-duty" work to make their Division effective, engaging, and welcoming to members.

The citation for Shirley reads:

For more than 20 years, Shirley has been the "go to" person when something needed to happen in the Fifth Division. Shirley has been at the center of virtually every Division activity to the point where, if something good happens, you can be sure Shirley is in the middle of that success. From getting others to help with activities to personally stepping up to fill critical vacancies, Shirley is always there.

On behalf of the entire PNR membership, I'd like to express our heartfelt congratulations and appreciation to Shirley for her exemplary service to the Fifth Division.

The October 2017 issue of *NMRA Magazine* has more background information about the award and lists recipients from the other Regions.

In Memoriam

This section is dedicated to the remembrance of those members of the NMRA Pacific Northwest Region whom we have lost over the past year. We extend our deepest sympathies, thoughts, and prayers to their families and friends. We will sincerely miss the fellowship of these folks and all their contributions to the NMRA and hobby.

Deceased Members of the PNR — September 2016 through October 2017

September 2016	Div 1	Dirk Kruysman	Roseburg, OR	PNR Past Treasurer
October 2016	None			
November 2016	None			
December 2016	Div 3	Paul Remaley	Twin Falls, ID	Life Member
January 2017	Div 5	Robert L. Sample	Elk, WA	Life Member
February 2017	Div 5	Don Locke	Wenatchee, WA	PNR Past Vice-President
March 2017	Div 3	Kenneth M. Young	Boise, ID	Inactive Member
		Milton N. Thomas	Chehalis, WA	Life Member
		Rick Scarvie	Federal Way, WA	Life Member
April 2017	Div 3	Karl R. Baker	Preston, ID	
		Philip J. Garlock	Boise, ID	Inactive member
		Robert W. Smylie	Boise, ID	Inactive member
May 2017	Div 1	David R. Kleger	Eugene, OR	
June 2017	None			
July 2017	None			
August 2017	Div 4	Allan F. Rathbun	Redmond, WA	
	Div 7	Peter Gilbertson	Cobble Hill, BC	
September 2017	Div 3	Bruce McCosh	Boise, ID	PNR Past Member Aid Chair
October 2017	Div 1	Willard L. Leeds	Depoe Bay, OR	MMR, Life Member (102 years old)
	Div 7	John W. MacWhinnie	Kamloops, BC	

Passing of Bruce McCosh

Bob Parrish, Third Division

It is with great sadness that I must report to you the passing of Bruce McCosh on September 5, 2017. He had a cancer return from a previous event that had no good options for treatment.

Bruce was a huge asset to the hobby for many years and a good friend to me for nearly thirty of those years.

Until this past year, Bruce had been the Third Division's Achievement Program Manager and also the PNR Member Aid Chair. He was involved variously with the Treasure Valley Modular Railroad and the Idaho State Penitentiary layout through its closing about year 2000. His personal railroad, Avery Power and Light, was a regular source of interest and operations for nearly ten years. This railroad operated over the electrified area of the Milwaukee Road from Othello, Washington, to Harlowton, Montana, in the early 1950's. Wednesday nights in his basement was the scheduled gathering place to operate this line. Many modelers received their Dispatcher certificate while switching this pike.

Bruce was the "go-to" person when a locomotive would not listen to its DCC name. He kept a programming log of many of the locomotives operating in the Boise area. His backlog of available parts kept many of us running on our own layouts.

In Bruce we have lost a good friend. Take a moment and recall your best memory of Bruce and the hobby we share together.

Features

Fixing Athearn Blue Box Cars

Article and photos by Tom Waters, 3rd Division

Do you have one of those Athearn cars in the blue box, better known as a shake-the-box kit? Have you put it together and had trouble keeping it on the track? Maybe a few quick steps to improvement is all you need.

I have one, count that, one Kadee car in my fleet; the rest are a combination of Athearn and other makes but mostly Athearn. Why? you ask. Because I'm building for operation and I don't want that really nice Kadee car destroyed by my operators.

I have recently been putting my cars through NMRA "Standards." You know, checking wheel width, weight, and coupler height. Here are some tips for better performance.

1. **Underframe:** Use a jewelers file to clean up any flash around the mold release points so the frame lays flat against the metal weight.



Athearn underframe



The end above the coupler pocket.



Mold release points along the frame.

Have you changed your address or other membership information?

Notify NMRA Headquarters

email: nmrahq@aol.com

Phone: 423-892-2846 (8 a.m.–4 p.m. ET)

Mail: P.O. Box 1328, Soddy Daisy TN 37384-1328

2. **Car Body:** Clean up the flash from the mold release points so the metal weight will lay flat.



Mold release points on the car floor.

3. **Weight:** Lay the weight on a flat surface and ensure it's flat. They can be twisted as well as bent. I have used a hammer on a concrete floor but mostly I just use a vice.



They're usually not this bad.

4. **Trucks:** The handy *Truck Tuner* for cleaning out the bearings.

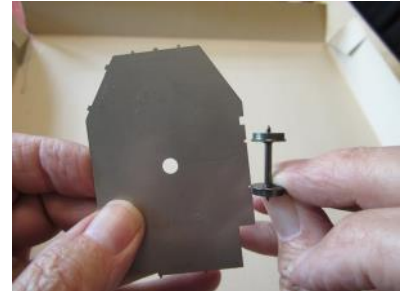


This will make them roll really nice.



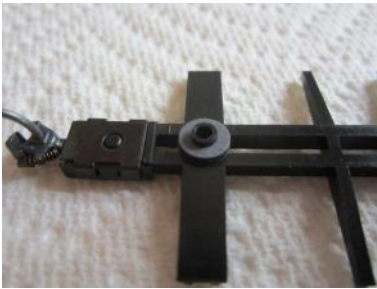
Just follow the instructions provided.

5. **Wheel Width:** The slightest difference will cause derailments.



NMRA gauge

6. **Wobbly Trucks:** Don't over tighten the truck screw. If your cars wobble going down the track, use a Kadee truck washer.



Orange washers are thicker than the gray version.

7. **Coupler Height:** This is so important. If the air hose (trip pin) is too low, it will catch in turnout frogs. All of the solutions to correcting coupler height are enough for another article.



The new Kadee coupler height gauge is insulated.

8. **Car Weight:** NMRA Recommended Practice 20.1 for HO scale says one ounce plus one half ounce per inch of car body length.



I marked this on my programming track board.

9. **Letter Scale:** Hiding additional weight can be a real challenge.



Any scale that measures in ounces will work.

10. This is the 'Car Box' where I keep my tools for car maintenance.



NMRA gauge, Truck Tuner, and screw driver along with some new metal wheels ready for replacement.

And by the way, after some operating time, you will need to put your cars back through "Standards" because they WILL start acting up again.

Model Railroading Can Make You A Genius

Bob Parrish, MMR, 3rd Division

I am all about safety, but there are limits. There are times when a guy just has to make some progress on his work bench.

I long ago tired of the various hobby magazines prefacing every comment about paint with cautions about outside use and respirators and like that.

It is like they can't open a screw cap without reciting this stuff.

So I thought it was time to recite to any and all my "Darwinian Theory of Brain Cell Development."

An understanding of Darwinian succession, *survival of the fittest* stuff, is necessary for this theory. You might find a side trip to Google insightful.

Fellow beer drinkers take heed ... This pertains also to alcoholic substances of your choice.

To begin:

If you drown enough brain cells with the petro-chemical paint of your choice, which brain cells will go away first?

Darwin, of course, would argue that the weak ones will go away first.

Therefore, the more paint I spray with an acetone or ketone base, the smarter I become.

Model railroading really is the greatest hobby. It just keeps giving in the most unexpected ways.

Save the Date! May 30–June 2, 2018

2018 PNR Convention—Stumptown Express

Red Lion on the River—Jantzen Beach

Portland, Oregon

For more information, visit: <http://www.pnrnmra.org/>

Officers' Reports

From the President's Outbox

Jack Hamilton, MMR

Last month, to resolve the issue of “advertising” in *The Switchlist*, I asked you to send me your input. The response was healthy and provided the information we needed to make a decision that would reflect the thinking and desires of the majority of the members. Thanks to those of you who were interested enough to provide an input. You made a difference.

I am pleased to inform you that Jerry Enders, Silverdale, Washington, (4th Division) has agreed to serve as PNR Secretary. Jerry models in HO and is an enthusiastic participant in Division and Regional activities. I am very pleased that Jerry has agreed to make this initial venture onto the NMRA leadership team. My thanks to Jerry for agreeing to serve.

I recently exchanged emails with Frank Koch, National Achievement Program Executive Assistant Manager, who jokingly asked if everyone in PNR was an MMR because he had not received any AP input for the previous month (the month I was on the road). Perhaps one of the reasons for the humor is the record that you have established within the program. PNR has 42 living MMRs (with 2 more about to be recognized). In the past year (October 2016–October 2017), our members have earned over 65 certificates and 8 new MMRs have been recognized. That should pretty well dispel any rumors or myths about the program and how it is administered. It is not easy but it is also not impossible. If you have an operating home layout, there is a very good chance that you have already earned two certificates (Scenery and Electrical) or are very close to completion. There is also a high probability that you have earned Merit Awards in other areas. The way to find out where you actually stand is to invite someone from your Division AP team over to take a look and provide an assessment and some advice on how to proceed. This has nothing to do with seeking recognition but has a lot to do with taking advantage of a basic NMRA benefit to expand your modeling horizons. The individuals working at the Division level are all dedicated to making the program work and helping individuals be successful. Give them a call.

November is National Model Railroad Month. Are you doing anything to share your hobby and to bring the fun of model railroading to your friends and neighbors? All the people you know who think that “Good old Bob spends all his time playing with trains” might just enjoy seeing what it is you actually do and might gain a new perspective on why you hide away in your garage/attic/basement. Why not hold an open house and invite them all over to see your empire and your work? If your modular group is on the road appearing at a show or event, make sure you take the time to get outside of the layout and actually talk to the people. That might even be fun and it sure will help dispel the myths about how hard it is to be a model railroader. Don't forget to make a special effort to attend any activities your Division might have scheduled during the month. Sure would be a good way to get together with some of the “old guys” you know but have not seen for a while and to meet some of the new or “younger” modelers (those under 70). Model railroading is supposed to be fun, so get out there and enjoy.

Vice-President's Report

Shirley Sample

No report this quarter.

2016 Treasurer's Report

Dave Liesse

No report this quarter.

Office Manager's Report

Ed Liesse

This report to the Members of the Pacific Northwest Region, NMRA, covers the months of September 2016 through October 2017.

You can see by looking at the figures below what's happening with the membership of the Region. Our numbers are going down as are most other regions of the NMRA. We're all trying to figure out the reasons why! As you can see below

we took in 163 new members, including 65 Rail Pass members, yet we end up with a net loss of 42 during the year period. We did lose eleven active members to death and four members on the inactive roster. The inactive members are not included in any of the numbers below.

As has been mentioned in the past is to look at how we take care of the new members in the Divisions. Are we reaching out to them to get them involved in the local activities? Are we following up with them to see if they have any questions we can help them with? Remember, Membership retention is the job of every member!

Much of this report (Table 1 through Table 4) centers on the relationship when they come on board as a new member and the time they go on the 30-60-day Past Due Reports. You can see by looking at the tables how your division is performing.

Table 1. Membership showing Rail Pass (RP) portion by Division

Div	Sep-16 Mem RP	Oct-16 Mem RP	Nov-16 Mem RP	Dec-16 Mem RP	Jan-17 Mem RP	Feb-17 Mem RP	Mar-17 Mem RP	Apr-17 Mem RP	May-17 Mem RP	Jun-17 Mem RP	Jul-17 Mem RP	Aug-17 Mem RP	Sep-17 Mem RP	Oct-17 Mem RP	Net +/- over year Sep-Oct
1	106 5	106 2	107 3	109 1	110 2	106 2	108 2	106 2	105 3	103 3	101 2	101 2	98 1	96 1	-10
2	163 2	164 2	157 2	155 2	155 2	155 2	153 3	150 2	142 2	140 2	144 3	143 3	141 3	140 2	-23
3	71 2	74 6	71 4	69 4	69 4	69 4	71 4	76 5	76 5	73 2	73 2	73 2	72 3	77 8	6
4	522 13	526 9	520 8	520 5	529 7	523 6	528 8	529 9	529 9	525 10	527 9	526 8	515 6	509 6	-13
5	204 5	201 4	198 1	197 1	195 0	192 0	189 0	188 0	194 6	195 7	195 7	196 9	197 9	195 9	-9
6	203 10	207 9	203 8	198 5	207 7	204 5	203 5	196 3	206 4	206 4	206 4	204 2	218 2	217 2	14
7	330 7	329 6	337 12	332 10	334 9	332 9	331 10	318 10	321 11	317 10	314 9	316 10	317 7	323 17	-7
Tot	1599 44	1607 38	1593 38	1580 28	1599 31	1581 28	1583 32	1563 31	1573 40	1559 38	1560 36	1559 36	1558 31	1557 45	-42

Table 2. New members showing Rail Pass portion by Division

Div	Sep-16 Mem RP	Oct-16 Mem RP	Nov-16 Mem RP	Dec-16 Mem RP	Jan-17 Mem RP	Feb-17 Mem RP	Mar-17 Mem RP	Apr-17 Mem RP	May-17 Mem RP	Jun-17 Mem RP	Jul-17 Mem RP	Aug-17 Mem RP	Sep-17 Mem RP	Oct-17 Mem RP	Total Mem RP
1	1 0	0 0	1 1	0 0	1 1	0 0	0 0	0 0	1 1	0 0	2 0	0 0	0 0	0 0	6 3
2	0 0	0 0	0 0	0 0	1 0	0 0	1 1	0 0	1 0	0 0	1 1	0 0	0 0	0 0	4 2
3	1 0	4 4	0 0	0 0	0 0	0 0	0 0	2 2	0 0	0 0	0 0	0 0	1 1	4 4	12 11
4	2 2	3 0	2 1	2 0	11 3	1 0	8 2	7 3	5 0	3 1	0 0	2 0	1 1	0 0	47 13
5	0 0	0 0	1 0	0 0	0 0	1 0	0 0	0 0	6 5	3 1	1 0	1 1	0 0	0 0	13 7
6	2 0	2 1	2 0	0 0	2 1	1 0	0 0	4 0	8 1	1 0	0 0	0 0	12 0	0 0	34 3
7	1 0	4 0	12 7	3 1	1 0	2 1	1 1	2 1	3 0	5 5	0 0	2 1	1 0	10 9	47 26
Tot	7 2	13 5	18 9	5 1	16 5	5 1	10 4	15 6	24 7	12 7	4 1	5 2	15 2	14 13	163 65

Table 3. Members 30-days Past Due showing Rail Pass portion by Division

Div	Jun 16 Mem RP	Jul 16 Mem RP	Aug 16 Mem RP	Sep 16 Mem RP	Oct 16 Mem RP	Nov 16 Mem RP	Dec 16 Mem RP	Jan 17 Mem RP	Feb 17 Mem RP	Mar 17 Mem RP	Apr 17 Mem RP	May 17 Mem RP	Jun 17 Mem RP	Jul 17 Mem RP
1	2 0	1 0	3 0	2 1	1 1	0 0	1 0	0 0	4 0	0 0	2 0	2 0	2 0	3 1
2	4 0	2 0	4 0	4 0	1 0	7 0	2 0	2 0	3 0	4 0	6 0	11 0	2 0	0 0
3	8 0	2 0	3 0	0 0	1 0	4 2	1 0	0 0	0 0	0 0	0 0	0 0	3 3	0 0
4	12 1	16 0	8 1	15 0	9 1	10 2	9 3	6 0	8 1	5 0	11 0	9 0	13 1	3 1
5	2 1	3 0	1 0	3 0	5 1	4 3	3 0	2 1	5 0	6 0	1 0	1 0	2 0	3 0
6	2 0	4 1	2 0	2 0	1 1	7 1	6 3	1 0	5 2	3 0	17 2	1 1	1 0	0 0
7	3 1	2 0	2 0	0 0	5 0	7 0	11 3	0 0	7 1	5 0	17 0	6 0	10 5	3 0
Tot	33 3	30 1	23 1	26 1	23 4	39 8	33 9	11 1	32 4	23 0	54 2	30 1	33 9	12 2

Table 4. Members 60-days Past Due showing Rail Pass portion by Division

Div	Jun 16 Mem RP	Jul 16 Mem RP	Aug 16 Mem RP	Sep 16 Mem RP	Oct 16 Mem RP	Nov 16 Mem RP	Dec 16 Mem RP	Jan 17 Mem RP	Feb 17 Mem RP	Mar 17 Mem RP	Apr 17 Mem RP	May 17 Mem RP	Jun 17 Mem RP	Jul 17 Mem RP
1	3 2	1 0	0 0	2 0	1 0	1 1	0 0	1 0	0 0	4 0	0 0	1 0	2 0	2 0
2	29 21	4 0	2 0	3 0	4 0	1 0	7 0	2 0	2 0	2 0	3 0	4 0	11 0	1 0
3	2 0	8 0	2 0	3 0	0 0	1 0	4 2	1 0	0 0	0 0	0 0	0 0	0 0	3 3
4	10 6	8 1	14 0	6 1	10 0	8 1	9 2	8 2	6 0	8 1	4 0	9 0	6 0	13 1
5	1 0	2 1	3 0	0 0	1 0	5 1	3 2	3 0	2 1	4 0	6 0	1 0	1 0	2 0
6	5 0	2 0	4 1	2 0	1 0	1 1	7 1	5 3	1 0	5 2	3 0	16 2	1 1	1 0
7	6 0	3 1	1 0	2 0	0 0	4 0	6 0	10 3	0 0	4 1	4 0	16 0	5 0	10 5
Tot	56 29	28 3	26 1	18 1	17 0	21 4	36 7	30 8	11 1	27 4	20 0	47 2	26 1	32 9

Achievement Program Report

Jack Hamilton, MMR, AP Chair

The two individuals discussed in the last issue who were working toward MMR but having a bit of a problem getting things straight because of the scale and type of modeling (Large and Garden) have completed all the necessary work and have been recognized as Master Model Railroaders. Our most hearty congratulations and thanks to two guys who worked together to provide mutual encouragement, overcame myths and rumors and achieved success

Gary Lee, MMR 598 Division 2

Warner Swarner, MMR 599 Division 2

One additional individual has completed all requirements and been recognized as a Master Model Railroader. This is another case of a member who has done exceptional work but who has, for whatever reason, escaped the notice of the AP teams. The visit to his layout was enjoyable and educational.

Mike O'Connell, MMR 603 Division 4

Congratulations MMRs and Well Done!!!

If you have not invited your Division AP Manager or a member of the Evaluation team to stop by and take a look at your layout, you may be missing out on the benefits of a great program. **Give it a try – you might just like it.**

Since the last report, we have had a number of earned awards. In addition to those noted above:

Greg Hancock earned a Golden Spike Award
George Nethery earned a Golden Spike Award
Greg Cave earned a Golden Spike Award
Mike Walker earned a Golden Spike Award
Loraine Adams earned a Golden Spike Award
Ken Warenko earned a Golden Spike Award
James Warenko earned a Golden Spike Award
Mike Saucier earned a Golden Spike Award
Judy Saucier earned a Golden Spike Award
Bruce Kingsley earned a Golden Spike Award

The following members have earned Merit Awards for their work:

Allan Cunningham earned a Merit Award for Structures
Bob Deem earned a Merit Award for Cars
Bruce Kingsley earned Merit Awards for Structures (6) and Scenery
Gary Lee earned Merit Awards for Civil (3), Motive Power (3), Prototype Models, Scenery, and Structures (5)
Mike O'Connell earned Merit Awards for Scenery, Cars (5), Civil (3), Prototype Models, and Structures (10)
Warner Swarner earned Merit Awards for Civil (3), Scenery, and Structures (7).

The following members have earned Achievement Program Certificates:

Gary Lee—Master Builder – Motive Power, Prototype Models, Scenery, Structures; Model Railroad Engineer – Civil, Electrical; Chief Dispatcher; Model Railroad Author
Bruce Kingsley—Master Builder – Scenery, Structures
Mike O'Connell—Master Builder – Prototype Models, Cars, Scenery, Structures; Model Railroad Engineer – Civil, Electrical; Association Volunteer, Model Railroad Author
Warner Swarner—Master Builder – Scenery, Structures; Model Railroad Engineer – Civil, Electrical; Chief Dispatcher

Congratulations to all. Well Done!

If you ain't havin' fun, you ain't doin' it right!

Nominations Committee Report

Brian Stokes, Chair

No report this quarter.

Division Reports

1st Division

Rich Pitter, Superintendent

First Division held its fall Mini-Meet at the Coos County Fairgrounds in Myrtle Point, Oregon, on September 16. The event, hosted by Christopher Jones, featured clinics, a model contest, and operation on the large HO scale DCC layout at the Coos County Museum. The clinics were: Roger Rasmussen: Dead Rail in HO Scale; Richard Payne: Scratch Building Log Cabins Using a Standard Table Saw; Joe Fugate: Lessons Learned Since Dismantling a Layout and Building a New One; Jim Davenport: Scenery Using Different Technique with Foam; Trent Kulm: Constructing HO Scale Vending Machines; Jeoron Gerritsen: Kit-Bashing Super Detailed HO Scale Steam Locomotives; and Aaron Gibbons: Building with Paper.

Our next Mini-Meet will be held in Tangent, Oregon, on March 17, 2018, hosted by Charlie Hutto.

2nd Division

Charlie Comstock, Superintendent

The 2nd Division is at work on the 2018 PNR Regional Convention to be held at the Jantzen Beach Red Lion (on the River) in Portland, May 30–June 2, 2018. The [Stumptown Express](#) website is now live and new convention information continues to be added. So, you may want to check it out on a regular basis.

I'm happy to report that two new 2nd Division members have earned their MMRs:

Gary Lee

Warner Swarner

Their awards were presented at the Oct 21st division meet held at Gary's railroad in Corbett, Oregon.



3rd Division

Tom Waters, Superintendent

The members of the Third Division have started planning for the Regional Convention scheduled here in 2021. Yes, that's three plus years from now but ... we are actively looking at venues and hotel accommodations in the Treasure Valley. As you may know, we have lost some great friends who were involved in putting on the last convention here, so even if you don't live in the Third Division you might consider volunteering.

Last time, I mentioned how we consistently hold our events on the second Tuesday evening and the fourth Saturday. And just as you say that, you are forced to make other arrangements. Our Fall Meet was postponed a week and Larry and Lori Sebelley were planning to attend. I was, however, able to put together a short layout tour for them while they were in town. It's always great to have friends from the PNR call and stop by for a visit.

Finally, I announce that my tenure as Superintendent is coming to an end. The past four years have been nothing but great fun especially getting to know the other unselfish leaders of the PNR. What a great bunch who have nothing but love for our hobby in all of its many forms..

4th Division

Russ Segner, Superintendent

The Fourth Division is off to a good start this Fall.

Several of our clinics are featuring “Make and Take” sessions and these are well attended. Last weekend, OLY-Ops featured many fine layouts for over a hundred operators. Efforts are underway to establish such an effort in the close-in Seattle/Bellevue areas. This will probably happen this next Spring.

Leadership is always a problem and recruitment efforts are starting to get results. Two new Board members have stepped forward, Anton Faulk (Marklin HO) and Robin Peel (Sn3). Al Lowe (N-Trak) has been elected Assistant Superintendent. Plans are underway for next year’s Science Center show as well as the multi-module show at the Washington State History Museum in Tacoma.

Yesterday, the 38th annual Boeing Club swap meet was held in Kent and plans are underway for the Monroe show next February. Our Annual General Membership meeting is being planned for late Spring and efforts are underway to select our next Golden Grab Iron winner.

Operations, 3D printing, new electronics, and weathering techniques using the military modeler methods and materials are getting a lot of attention.

Our membership is holding pretty steady with our many modular groups playing a major role in outreach to model railroaders in our area.

5th Division

Bill Fassett, Superintendent

The 2017–18 Division 5 executive committee met in Missoula on September 15, following the Missoula Train Show. Executive committee members are: Bill Fassett (Supt., Spokane), Bill Kleinert (Asst. Supt., Lewiston), Dick Smith (Chief Clerk, Hamilton, Montana), and Tim Bristow (Paymaster, Spokane). The 2017–2018 plan for Division 5 includes the following:

Rotation of annual business meetings among different cities in the Division—the 2018 meeting will be held on April 21 in Lewiston, Idaho, hosted by the Lewis-Clark Train Club, Inc.

Three mini-meets will be scheduled in Spring, Summer, and Fall at various venues around the Division.

The Division will fund stand-alone clinics arranged by any members who can put together a small group in their area.

The Goat newsletter will resume publication with the Fall 2017 edition in December. An editorial committee has been formed consisting of Frank Wilhelm (Moscow, Idaho), Alan Ashton (Spokane), and Mike Tietz (Spokane). Clubs in the Division are being asked to appoint a liaison to provide articles and updates to the editors.

The executive committee has begun holding conferences via Skype on the 2nd Monday of each month at 10:00 AM PT.

Clubs in the Division were active during September and October. The Missoula club and the River City Modelers hosted very successful train shows on September 15 and October 15, respectively. The Tri-City Model Railroaders held a public modular display in Kennewick on September 30. The Tri-City club will also display on December 1 and 2 at the Richland Community Center.

The Tri-City Model Railroaders club is busy working on its new layout and plans on having some of its first track working in early December. Here is their website: <https://www.owt.com/tcmr/TCMR1/Welcome.html>

NMRA members in the Division are active in support of the Inland Northwest Rail Museum in Reardan, Washington, about 20 miles west of Spokane on U.S. Highway 2. Several members serve as volunteers on Fridays, Saturdays, or Sundays when the museum is open to the public. The Inland Northwest Garden Railway Society has loaned a modular layout to the museum, and River City Modelers were active in displaying at the 50th anniversary of the Inland Empire Railroad Historical Society (the museum’s owner) in October. NMRA members may learn more about the INRM at <https://www.facebook.com/InlandNorthwestRailMuseum>.

Finally, the Division is very proud that Shirley Sample received a 2017 NMRA President’s Award for Service to the Division.

6th Division

Ed Molenkamp, Superintendent

No report this quarter.

7th Division

John Martin, Superintendent

VTEX — By the time you read this, Vancouver Train Expo (Nov 11th and 12th) will be history. The public show has been a local fixture since the early 1980s and, of course, we hope it continues for many years to provide a glimpse of our hobby to an ever-increasing audience of young people. This year's show is projected to draw over 6,000 visitors which moves it into the mid-size category.

RMMBC — Some ambitious plans are evolving for The 3rd Annual Railway Modellers Meet of British Columbia, which takes place May 4–6, 2018, in Greater Vancouver. VERY inexpensive and comfortable accommodations are available at the Simon Fraser University campus, close to the clinic rooms. The organizers are finalizing arrangements for a well-known guest speaker and a fresh selection of clinics, layout tours, and operating sessions is being prepared. Please put the event on your calendar — May 4–6 next year. We are not too far away for everyone in the PNR.

Further info at <http://railwaymodellermeeetofbc.ca/>

Newsletters — A reminder that our website includes past issues of the 7th Division's *Bulletin Board* newsletter and these are accessible at <http://7divpnr.ca/>

PNR Interchange

The PNR Interchange is a free service for PNR members wishing to buy, sell, donate, or exchange model or prototype railroad related items. Commercial enterprise transactions and advertisements are not allowed except as provided for hobby stores below. Members may also use this service to request or solicit hobby or railroad related information, research results, and other resources or materials from other members. Members' classified ads and notices are restricted to text format only (no graphics) and length should be no longer than 120 words. Sequential ads of the same nature or having the same or nearly same content are not permitted. The suitability of submitted classified ads for publication is determined at the sole discretion of the Switchlist Editor. Email your submission along with your NMRA membership number to the Editor at switchlist@pnr-nmra.org

Hobby stores that support model railroading may include an advertisement in PNR Switchlist. The ad is limited in size to a business card size and should be provided in ready to copy and print format as determined by the Switchlist Editor. Advertisements for hobby stores that provide a discount for NMRA members shall be so identified with the advertisement. Hobby store ads may be run sequential issue to issue.

FOR SALE: 3-rail O-gauge locomotives, rolling stock, track and accessories. Lionel, Williams, Williams (before Bachman), MTH, Weaver, Marx. Must sell due to old age and health. E-mail to rrbill10@comcast.net for pdf of pictures and prices. Send SASE to Bill Pyper, PO Box 885, Salem, OR 97308 for hard copy.

FOR SALE: All items are full-size prototypes. Searchlight signal with two working signal heads, \$1500. NP "shorty" switch stand, \$400. D&RG switch stand, \$400. SP switch stand, \$400. All three switch stands for \$1000. Photos available. Ernie Carlson, 503-622-3573

**Not getting the bi-monthly NMRA eBulletin?
The NMRA eBulletin comes out every other month**

Email: nmrahq@aol.com

Phone: 423-892-2846 (8 a.m.–4 p.m. ET)

Mail: P.O. Box 1328, Soddy Daisy TN 37384-1328

POSITION ASSISTANCE REQUIRED: The PNR has a leadership position open which needs to be filled to permit the most effective support of our members and to maximize the ability of the Region to support Divisions in execution of NMRA programs and to deliver member benefits.

NMRA is (with the exception of a very small professional staff at Headquarters) a fully volunteer organization. It is the selfless service of members serving to assist each other that makes NMRA work. Simply stated, no member can expect to receive the benefits of the Association until they are first willing to assist in the delivery of those benefits.

WE are currently looking for an individual to fill the position of **Region Education Committee Chair**. The position description and expectations are as follows:

Education Committee Chair

P-1. General (Policy Manual)

1. The Education Program shall be consistent with NMRA education programs and will concentrate on achieving NMRA education goals and objectives.
2. The President appoints the Education Chair, who serves until replaced. There is no fixed term of office.
3. The Education Chair is a non-voting member of the Board of Directors. As such, there is no requirement to submit a formal proxy to appoint a representative to attend BOD meetings.

P-2. Duties and Responsibilities (Policy Manual)

1. The Education Chair will develop programs and materials to:
 - a. Support general public education on the history of railroads and the importance of railroads to the growth of nations.
 - b. Provide basic skill education for new entrants to the hobby. Such program materials should be available for use at division clinics or in support of public clinics at meets and shows.
 - c. Provide advanced skill and knowledge clinics for more experienced members for the purposes of increasing skill levels, exchanging modeling ideas and experiences, and improving the overall quality of modeling.
2. Other duties include:
 - a. Develop and maintain a list of clinicians and clinics within the PNR that are available for presentation during meets, shows, and conventions. The list may also include clinicians who are available to make presentations outside their home divisions.
 - b. Continuously investigate new methodologies and new outlets to improve education availability to members and the general public (for example, public access television productions and community college non-credit courses).
 - c. Keep the President, along with division superintendents and education chairs, apprised of new materials and programs available in the program and the successes achieved through the program.

Additional Notes: Because the education programs are executed at the Division level, the practical completion of the Education Program will require that each Division provide an active member to the PNR Education Committee. The President has directed each Division Superintendent to make such appointment and will provide the support necessary to keep Divisions active.

The Education Chair serves primarily as a collector and disseminator of education information using sources available from both National and Division levels. Active support and participation in the NMRA EduTrain® program and coordination with the National EduTrain Director are a part of the duties.

If you believe you can provide service of benefit to the Region and our fellow members and are interested in appointment to either of these positions, please contact me, Jack Hamilton, at gradiver@wavecable.com

Timetable

To add your events or activities to the Switchlist Timetable, PNR web page, and PNR Train Orders, contact the Timetable Editor, Mark Johnson at timetable@pnr.nmra.org

2017

Nov 11–12, 18–19, 25–26, Portland, OR

Columbia Gorge Model Railroad Club Annual Show, 2505 N. Vancouver Ave. 10 AM–5 PM, doors close at 4:30. Adults \$8, Kids (3-11) \$3. Info: (503) 28-TRAIN, www.columbiagorgemodelrailroadclub.com/show, email: info@columbiagorgemodelrailroadclub.com

Nov 25 (Sat), Camrose, AB

Camrose Model Train Swap Meet, 9 AM–2 PM; Camrose United Church, 4829-50th Street. Free admission to the public. The Model Train Vendor aspect of the event will have 32, approximately 30" x 8' tables, available for vendors, who wish to participate. Per Table price is \$15. Info: Diesel Horse Hobbies, cabooseman@hotmail.com

Nov 25–26, Central Point, OR

40th Annual Rogue Valley Railroad Show, Jackson County EXPO, 1 Peninger Road, Central Point, OR. Saturday 10 AM–5 PM, Sunday 10 AM–4 PM. Admission: Adults \$5, Ages 6-12 \$1, 5 and under FREE with paid adult. Free parking. Model railroad displays, historic railroad artifacts, swap meet, door prizes, and more. Proceeds benefit Medford Railroad Park. Info: Bruce Kelly at 541-613-1638, roguevalleyrailroadshow@gmail.com

Nov 25–26, Dec 2–3, Adair Village, OR

Corvallis Society of Model Engineers Open House. 7155 NE Vandenberg Ave. Sat and Sun: 10 AM–4 PM. Cost \$3; Ages 6-11: \$1; 5 and under: free. Info: www.csme1959.org

Dec 2 (Sat), Rickreall, OR

WVMRC annual Railroad Show and Swap Meet: Polk County Fairgrounds, 520 S. Pacific Hwy. West (Hwy 22 and Hwy 99W 10 miles west of Salem). 9:30 AM–2:30 PM. Over 100 tables, all scales of trains. Admission: Adults \$5, children under 12-free, 8 ft. tables \$30 each. Info: Judy MacInnes, 503-581-6071, macinnej@msn.com, www.wvmrm.webs.com

Dec 22–Jan 1, Tacoma, WA

22nd Annual Model Train Festival at The Washington State History Museum, 1911 Pacific Ave. December 22, 2017, thru January 1, 2018, 10 AM–5 PM (Closed Christmas Eve and Christmas Day). Included with museum admission (www.washingtonhistory.org). While Santa's elves produce a lot of train sets each holiday season, they can't hold a candle to the quality and scale of the ones on display each year at the Washington State History Museum's Model Train Festival. The event showcases model train displays designed and assembled by model train enthusiasts across the state. The displays occupy every floor of the museum and include the largest permanent model train layout in the state. Bring your camera! Santa onsite for free photos from 11 AM–3 PM on December 21, 22, 23. Info: Kimberly Wirtz, Marketing & Communications Director, at 253-798-5902 or kimberly.wirtz@wshs.wa.gov.

2018

Jan 13–15, Seattle, WA

44th Annual Pacific Science Center Model Train Show—200 Second Ave N, Seattle, WA. 10 AM–6 PM. The 4th Division, PNR coordinates the model railroads, historical displays, and related activities for this show. This is an exhibition show. No swap-meet or vendor sales. Child-interest activities and participation opportunities are encouraged. Current fee, parking, and other facility information is at www.pacificsciencecenter.org/plan-your-visit/. Info: www.4dpnr.com/pacific-science-center-show/

Jan 27–28, Portland, OR

The Great Train Show. Portland Expo Center. 10 AM–4 PM. Adult Admission is \$10 on Saturday—Good for BOTH DAYS! \$9 on Sunday. Kids 11 and under are admitted free and do NOT need a ticket. 250+ tables of trains for sale; 50+ exhibitors from across the country; huge operating model train displays; special HO scale train kids can run. Amazing 20' x 60' LEGO train display. Riding train for kids of all ages. Info: www.trainshow.com/portland

Feb 17 (Sat), Portland, OR

SP&S Railway Historical Society Railroad Swap Meet. 9:30 AM–2:30 PM. This will be held at Warehouse 23 at the exQuay, 100 Columbia St, Vancouver, Washington. Parking across the street, or on the street. Admission \$5, under 12 free. For more information or table rentals, contact: Jerry Pickell: pickell5141@msn.com or try 360-735-0516. Messages will be returned.

Mar 3 (Sat), Elsie, OR

The 14th Annual Pacific Model Loggers' Congress—takes place at the Camp 18 Restaurant and Logging Museum, 42362 Highway 26, Elsie, Oregon. Info: www.pacificmodelloggerscongress.com

Apr 22 (Sun), Nanaimo, BC

34th Annual Vancouver Island Spring Model Railroad Show. Beban Park Rec Center, 2300 Bowen Rd. Open 10 AM–4 PM. Operating model railroad layouts, vendors, swap tables. Popular vote contest. Info: Ken Rutherford (250) 724-4698 email kj.rutherford@shaw.ca

May 4–6, Burnaby, BC

Railway Modelers Meet of British Columbia (RMMBC) at Simon Fraser University. The emphasis is primarily on "modelling," as the name implies, with many interesting clinics, layout tours, and operating sessions. Full information and registration is at: <http://railwaymodellermeeetofbc.ca/>

May 30–Jun 2, Portland, OR

PNR Regional Convention 2018: Stumptown Express; Red Lion Jantzen Beach Hotel. Info: www.pnr2018.org and www.facebook.com/StumptownExpress/

Don't Forget to Mark Your Calendar!

May 30–June 2, 2018



Pacific Northwest Region Staff

Officers

President: Jack Hamilton MMR, 360-308-9845, gradiver@wavecable.com

Vice-President: Shirley Sample, 509-292-8332, shirley@busnws.com

Secretary: Jerry Enders, jpengeman@charter.net

Treasurer: Dave Liesse, 253-343-3445, nmradave@liessefamily.net

Asst. Treasurer (Canada): Larry Sebelley, 604-858-5717, sebelley@shaw.ca

sebelley@shaw.ca

Asst. Treasurer (US): Edwin Hill, 253-854-3321, edwin.p.hill@boeing.com

Office Manager: Ed Liesse, 253-529-7405, EEliesse@aol.com

Immediate Past President: Shirley Sample, 509-292-8332, shirley@busnws.com

Committee Chairs

Achievement: Jack Hamilton MMR, 360-308-9845, gradiver@wavecable.com

Ballot, USA: *Position vacant; please volunteer!*

Ballot, Canada: Richard Sutcliffe, 604-467-4301, ras1@uniserve.com

Contest: John DeSteele, 590-783-4665, greenriverrail@safe-mail.net

Convention: Larry Sebelley, 604-858-5717, sebelley@shaw.ca

Education: *Position vacant; please volunteer!*

Membership: Shirley Sample, 509-292-8332, shirley@busnws.com

Nominations: Brian Stokes, , bstokesndp@gmail.com

President's Award: Dave Liesse, 253-343-3445, nmradave@liessefamily.net

PNR Registered Agent: *Position vacant; please volunteer!*

Switchlist Editor: Greg Kujawa, 406-589-6256, switchlist@pnr.nmra.org

Webmaster: Mark Johnson, 780-436-2480, webmaster@pnr.nmra.org

Division Superintendents

1st Division: Rich Pitter, 541-636-3833, richpitter@aol.com

2nd Division: Charlie Comstock, 503-628-6323, trains@upwardaccess.com

3rd Division: Tom Waters, 208-375-4796, twaters8@msn.com

4th Division: Russ Segner, 425-228-7327, russseg@gmail.com


5th Division: Bill Fassett, 509-468-4900, b.fassett@comcast.net

6th Division: Ed Molenkamp, 780-455-1479, 6divsuper@pnr.nmra.org

7th Division: John Martin, 604-594-9719, jmartin@jdmartin.ca


Pacific Northwest Region National Model Railroad Association


 **Division 1:** Southwestern Oregon

 **Division 2:** Northwestern Oregon, Southwestern Washington

 **Division 3:** Southern Idaho, Eastern Oregon

 **Division 4:** Western Washington, Alaska

 **Division 5:** Eastern Washington, Northeastern Oregon, Northern Idaho, Montana

 **Division 6:** Alberta, Saskatchewan, Northwest Territories

 **Division 7:** British Columbia, Yukon

